



2 Cedar Road, Hatfield, Herts, AL10 8PA
£750,000

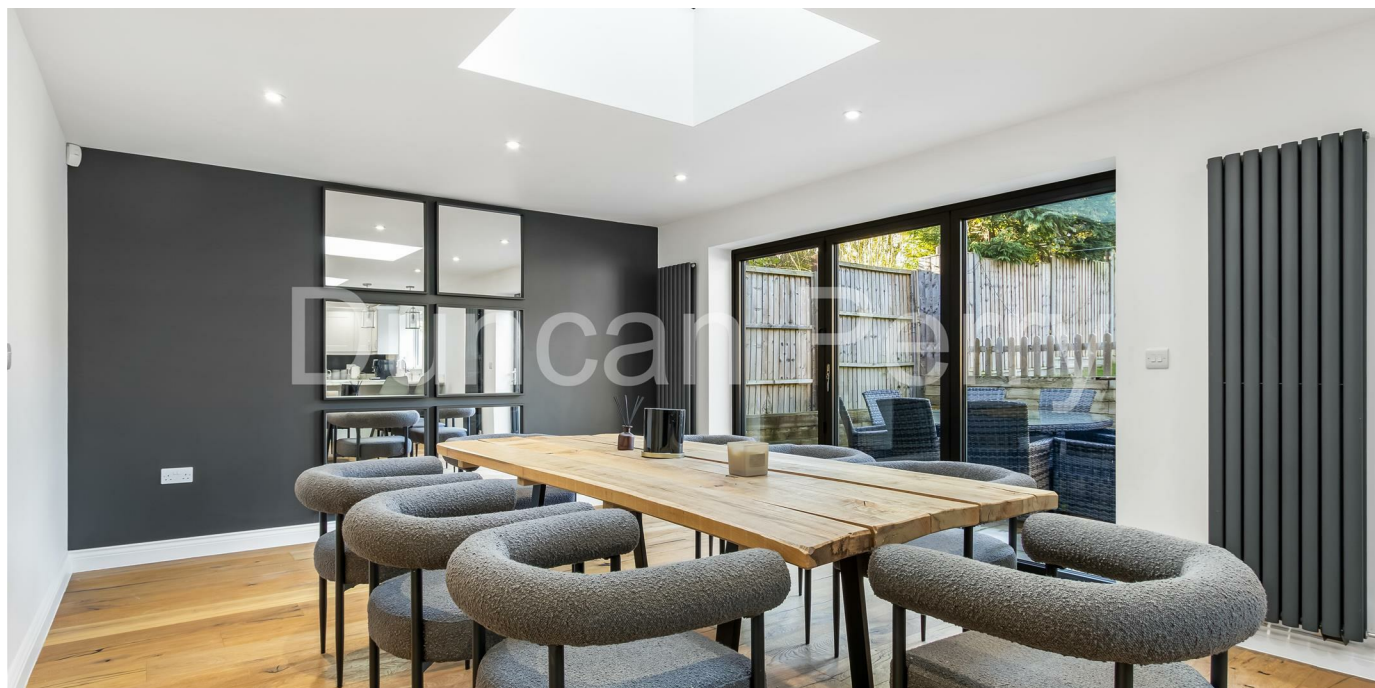
Duncan Perry
SALES ■ LETTINGS ■ COMMERCIAL

This significantly extended and refurbished four bedroom semi-detached house features a Kitchen/Family/Dining room, Lounge, Additional reception room, Utility room and Study. En-Suite shower room to bedroom one, family shower/bathroom and ground floor cloakroom, rear garden and parking to front. Internal viewing essential to

appreciate this good size family home.



- SIGNIFICANTLY EXTENDED AND REFURBISHED FOUR BEDROOM SEMI-DETACHED HOUSE
- LOUNGE AND FURTHER RECEPTION ROOM
- 30'3 x 12'6 KITCHEN/FAMILY/DINING ROOM
- UTILITY ROOM AND GROUND FLOOR CLOAKROOM
- STUDY
- EN-SUITE SHOWER TO MAIN BEDROOM
- GOOD SIZE REAR GARDEN
- AMPLE OFF-STREET PARKING TO FRONT
- TENURE - LEASEHOLD
- COUNCIL TAX BAND D - WELWYN AND HATFIELD COUNCIL



Entrance door with double glazed opaque panel opens into:

ENTRANCE HALL

22'1 x 3'9 widening to 11'11 at the widest point (6.73m x 1.14m widening to 3.63m at the widest point)
Tiled floor, feature wall mounted radiator, built-in under stairs cupboard, additional cupboard with light, LED ceiling spotlights.

GROUND FLOOR CLOAKROOM

White suite comprising top flush w.c. and wall mounted wash hand basin with mixer tap, half tiled walls, tiled floor, chrome heated towel rail, extractor fan, opaque double glazed window to side,

KITCHEN/FAMILY/DINING ROOM

30'3 x 12'6 (9.22m x 3.81m)

Kitchen Area:

Range of wall and base units in light grey having cupboards and drawers, quartz working surfaces extending to form breakfast bar, quartz upstand and window cill, double glazed window to rear, space for range style gas cooker with Stoves extractor hood above and tiled splash plate, integrated dishwasher, space and plumbing for American style fridge/freezer, glass ceiling dome, two feature wall mounted radiators, LED ceiling spotlights, engineered wood flooring.

Family/Dining Area:

Continuation of engineered wood flooring, three panel double glazed bi-fold doors to rear, feature wall mounted radiator, additional glass ceiling dome, LED ceiling spotlights. Open archway to:



LOUNGE

16'2 x 11 (4.93m x 3.35m)

Continuation of engineered wood flooring from the Family/Dining area, LED ceiling spotlights, wall mounted tv points.

UTILITY ROOM

8'4 (into fitted cupboards) x 6'4 (2.54m (into fitted cupboards) x 1.93m)

Range of units in light grey with grey worktops, single drainer stainless steel sink, space for washing machine and tumble dryer, concealed Baxi gas central heating boiler, pressurised hot water cylinder and electric consumer units, tiled splashbacks and floor, extractor fan, LED ceiling spotlights, door to side.

STUDY

9'6 x 6'4 (2.90m x 1.93m)

Double glazed window to front, tiled floor, double radiator, LED ceiling spotlights.

RECEPTION ROOM TWO

16'6 x 11'4 (5.03m x 3.45m)

This room is used as a cinema room by the present owners. Double glazed window to front, double radiator, wall mounted tv points.

FIRST FLOOR LANDING

Approached via a turn flight staircase from the entrance hall. Tall double glazed opaque window to front, ceiling spotlights, access to loft via retractable ladder.

BEDROOM ONE

15' x 10'7 (4.57m x 3.23m)

Double radiator, bedside lighting points, double glazed window to front.







Cedar Road, Hatfield, AL10 8PA

Total Area: 168.2 m² ... 1811 ft² (excluding garden)

All measurements are approximate and for display purposes only

BEDROOM FOUR

11'4 x 6'9 (3.45m x 2.06m)

Double glazed window to front, double radiator.

BATH/SHOWER ROOM

7'9 x 5'10 (2.36m x 1.78m)

Modern white suite comprising of bath with mixer tap, pedestal wash hand basin, top flush w.c, corner shower base with glass cubicle, overhead and hand shower, chrome heated towel rail, tiled walls and floor, double glazed opaque window to rear, LED ceiling spotlights, extractor fan.

EXTERIOR

REAR GARDEN

53'6 x 35'9 (16.31m x 10.90m)

Full width paved patio immediately adjoining the property, external lighting, power and water points. Steps from the patio lead up to the main garden area which is predominantly lawned with timber fence panelling to side and rear perimeters, pedestrian side access via timber gate with lighting and power points, gas meter cupboard.

FRONT

Predominantly gravelled to provide ample off street parking, external lighting points.



Tenure - Leasehold
Council Tax Band D - Welwyn & Hatfield Council.

Property Information

We believe this information to be accurate, but it cannot be guaranteed. If there is any point which is of particular importance we will attempt to assist or you should obtain professional confirmation. All measurements quoted are approximate. The fixtures, fittings, appliances and mains services have not been tested. These Particulars do not constitute a contract or part of a contract.



